

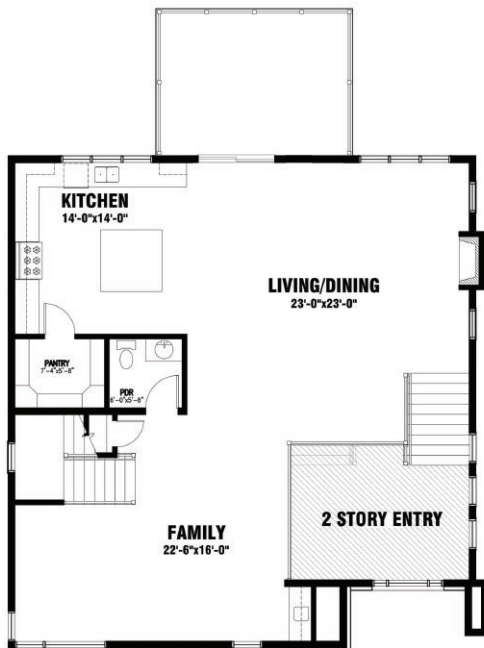
AMARA

DEVELOPMENTS INC

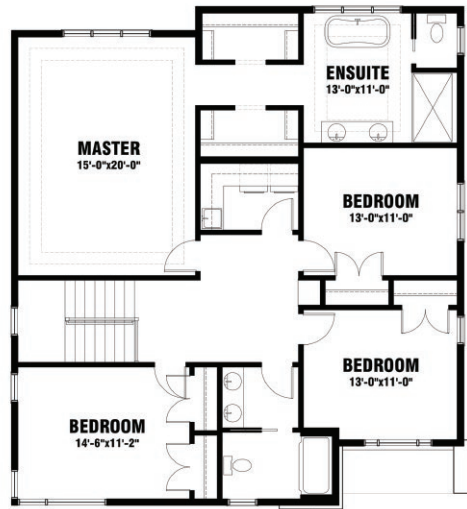
THE PALDEEN

5 BEDROOMS | 3.5 BATHROOMS | 3818 SQ. FT.

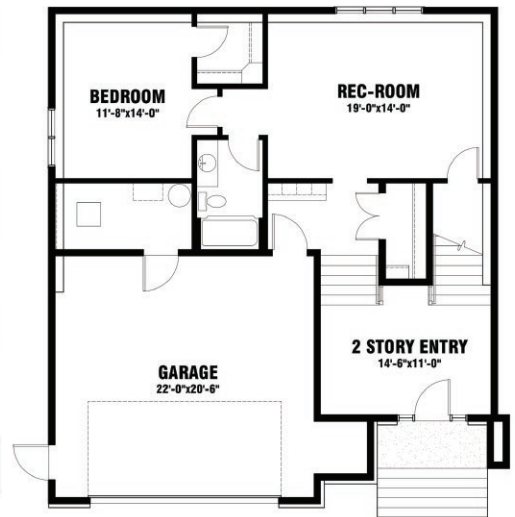
- Open concept design
- Modern finishes
- Hardwood floors and staircase
- Stone countertops
- Walk-in pantry
- Luxurious master suite



MAIN FLOOR = 1478 SQ.FT.



UPPER FLOOR = 1513 SQ.FT.



LOWER FLOOR = 827 SQ.FT.
GARAGE = 522 SQ.FT.

TIMELESS BEAUTY. AGE-OLD SIMPLICITY.

CONTACT
us TODAY

Larry
Allen

902 430 7197
larryallen@eastlink.ca

Jesse
Allen

902 980 0370
Jesse.allen@kw.com


THE PARKS
OF WEST BEDFORD