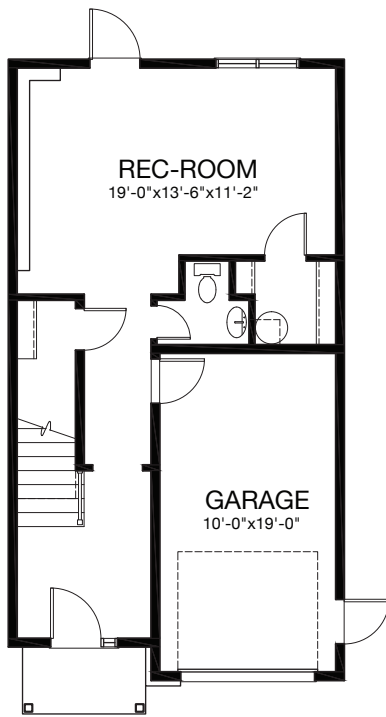


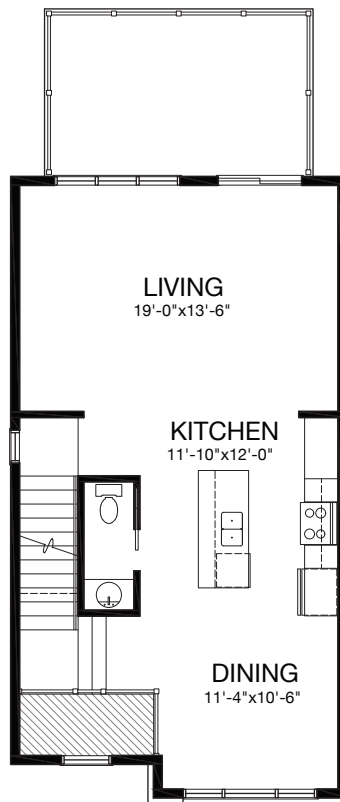
THE MARINA

3 BEDROOMS | 2.2 BATHS | 1905 SQ. FT.

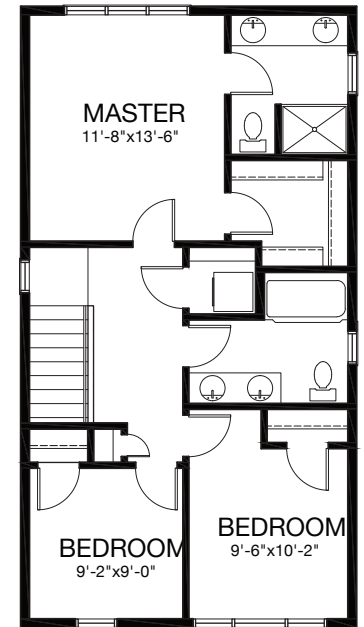
- Modern design
- Energy efficient
- Hardwood floors & Staircase
- 16' deck
- Mini split heat pumps
- 9' ceilings
- Single car garage



BASEMENT = 493 SQ.FT.
GARAGE = 230 SQ.FT.



FIRST FLOOR = 723 SQ.FT.



SECOND FLOOR = 740 SQ.FT.

TIMELESS BEAUTY. AGE-OLD SIMPLICITY.

CONTACT us TODAY

www.amarainc.ca
902 440 0987
chamilton@amarainc.ca

